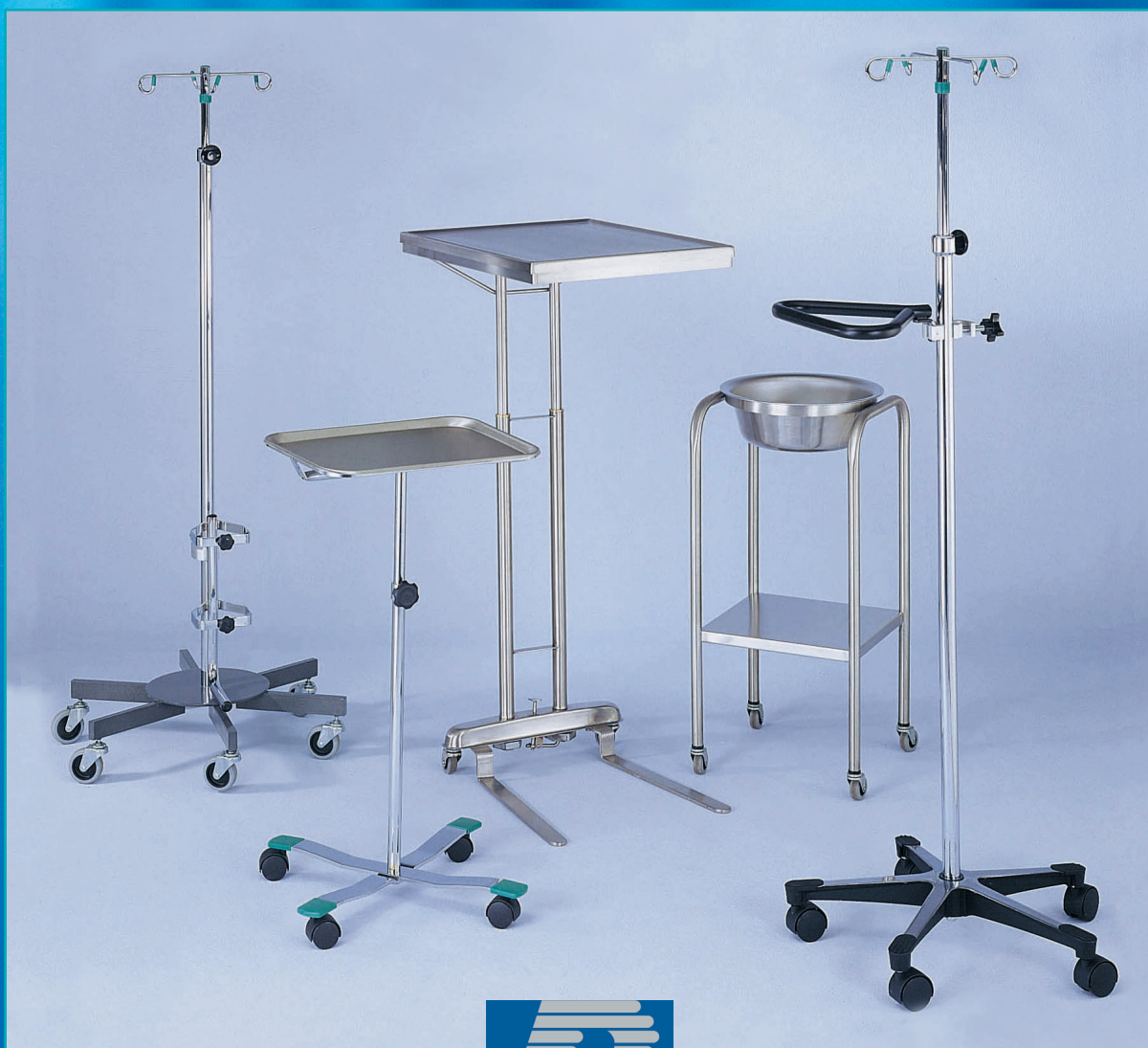


**BLICKMAN STANDS**



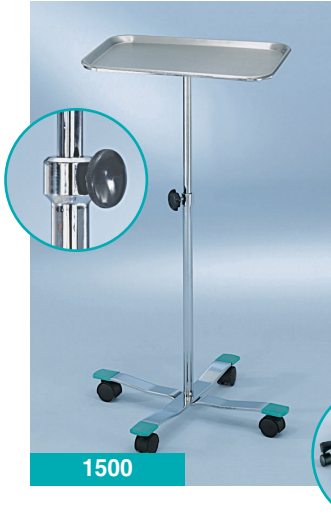
INSTRUMENT STANDS  
INTRAVENOUS STANDS  
FOUR-LEG  
FIVE-LEG  
SIX-LEG  
IV ACCESSORIES  
SOLUTION STANDS



## INSTRUMENT (MAYO) STANDS:

Our mayo stands have evolved to meet the needs of customers for maximum utility in an increasingly crowded surgical environment.

### CHROME



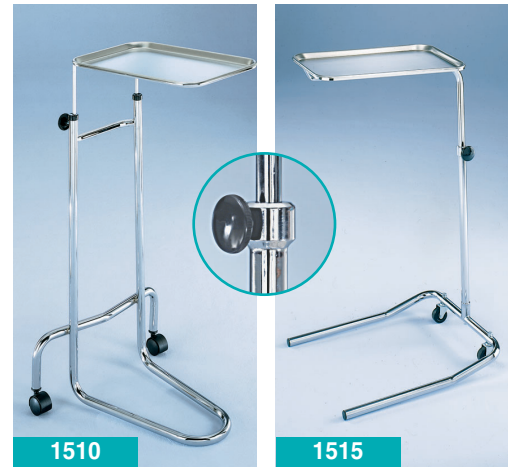
1500

**MODEL 1500 INSTRUMENT STAND** is supported by two chrome-plated, heavy bar steel cross braces (22"D) with Wall Savers™ to protect against scuffmarks. **MODEL 1501** features a five-leg cast aluminum base with wall savers. A Tru-Loc™ friction knob secures the height adjustment of the stainless steel tray. Travels easily on 2" twin-wheel hooded casters.

Model No.	Part No.	Feature	Height Adjustment	Tray Size	Ship Wt. (lb)
1500	0661500000	4- leg base	29" to 47-3/4"	12-5/8" x 19-1/8"	15
1501	0661501000	5-leg base	29-1/2" to 49"	12-5/8" x 19-1/8"	12

**MODELS 1510 AND 1515 DOUBLE-POST AND SINGLE-POST CHROME MAYO STANDS** adjust easily with the Tru-Loc™ friction knob to ensure secure positioning of the stainless steel tray. Travels easily on 2" twin wheel casters (1510) or hard rubber casters (1515).

Model No.	Part No.	Feature	Height Adjustment	Tray Size	Ship Wt. (lb)
1510	0661510000	Double- post	34-1/2" - 54"	12-5/8" - 19-1/8"	19
1515	0661515000	Single- post	31-1/2" - 51"	12-5/8" - 19-1/8"	12



1510

1515

### STAINLESS



1520SS

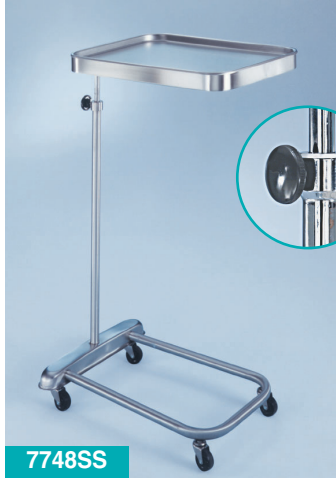
7751SS

**MODEL 1520SS AND MODELS 7741SS, 7751SS (NEWARK)** are a superior choice for value-conscious customers. They utilize a Tru-Loc™ friction knob for manual locking at desired height. The 1520 uses a lighter tray support and stainless steel base. (one size only)

Model No.	Part No.	Feature	Height Adjustment	Tray Size	Ship Wt. (lb)
1520SS	0671520000	Tru-Loc™ knob	37-1/4" - 64"	12-5/8" x 19-1/8"	21
7741SS	0637741000	Tru-Loc™ knob	39.5" - 62"	13-3/4" x 19-1/8"	45
7751SS	0637751000	Tru-Loc™ knob	39.5" - 62"	16" x 21"	45

## INSTRUMENT (MAYO) STANDS:

### STAINLESS



7748SS

**MODELS 7748SS AND 7744SS (STANFORD) MAYO STANDS** maneuver easily with two additional casters attached to a "U" shaped tubular frame. Great for the ER or exam rooms. Height adjusts with a Tru-Loc™ friction knob.



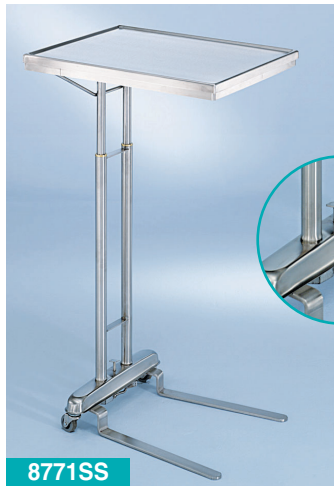
7765SS

Model No.	Part No.	Feature	Height Adjustment	Tray Size	Ship Wt. (lb)
7748SS	0647748000	"U" Shape base	39.5" - 62"	13-3/4" x 19-1/8"	35
7744SS	0647744000	"U" Shape base	39.5" - 62"	16" x 21"	35
7765SS	3602007765	12qt. kickbucket assembly	-	-	5

*Option: 12 qt. kickbucket inserted into frame.*



7767SS



8771SS



7749SS

**MODELS 7767SS AND 7769SS (RICHMOND) FOOT OPERATED MAYO STANDS** are number one in ease and convenience. Just lift the tray frame – it automatically locks. To lower, hold the tray frame and press the foot operated control button. Release to lock in place. A guard over the foot button prevents accidental release. Select our new **MODEL 8769SS DOUBLE- POST MAYO STAND OR MODEL 8771SS, DOUBLE-POST JUMBO MAYO STAND** when a larger tray size is required. **MODELS 7740SS AND 7749SS (MANHATTAN) MAYO STANDS** lower with a thumb-operated control button. To raise, lift the tray frame to desired height – it automatically locks in place.

Model No.	Part No.	Feature	Height Adjustment	Tray Size	Ship Wt. (lb)
7767SS	0617767000	Foot-operated	39.5" - 62"	13-3/4" x 19-1/8"	46
7769SS	0617769000	Foot-operated	39.5" - 62"	16" x 21"	46
8769SS	0658769000	Foot-operated	39.5" - 62"	16" x 21"	50
8771SS	0658771000	Foot-operated	39.5" - 62"	20" x 25"	54
7740SS	0627740000	Thumb-op. button	39.5" - 62"	13-3/4" x 19-1/8"	45
7749SS	0627749000	Thumb-op. button	39.5" - 62"	16" x 21"	46



## FOUR-LEG IV STANDS:

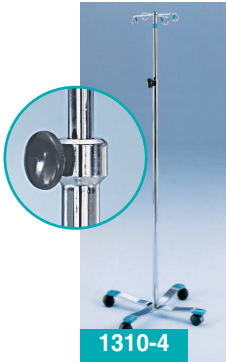
### CHROME

**MODEL 1305 IV STAND** is for value-conscious customers who will appreciate the chrome-plated construction. The stand is offered with two hooks welded to the pole or a removable two or four-hook ram's horn with colored secure-grip tips. Both sit on a four-leg epoxy-coated base with Wall Saver™ tips to protect walls. Twist-lock height adjustment. Stand travels on four, 2" twin-wheel hooded casters. Minimal assembly required.

Model No.	Part No.	Feature	Height Adjustment	Ship Wt. (lb)
1305	0561305000	welded hooks (2)	47 1/2" - 85-1/2"	10
1305-2P	0561305001	removable hooks (2)	52" - 91"	10
1305-4P	0561305401	removable hooks (4)	52" - 91"	15



1305-2P



1310-4

**MODEL 1310 IV STAND** sits on a 22" diameter chrome-plated heavy bar steel base with Wall Savers™ to protect against scuffmarks. The Tru Loc™ friction knob assures secure height positioning. Select from two or four hook ram's horn with secure-grip tips. The stand travels on four, 2" twin-wheel hooded casters. Height adjustment from 51-1/2" to 93". Minimal assembly required.

Model No.	Part No.	Feature	Ship Wt. (lb)
1310	0561310000	(2-hook)	14
1310-4	0561310400	(4-hook)	15

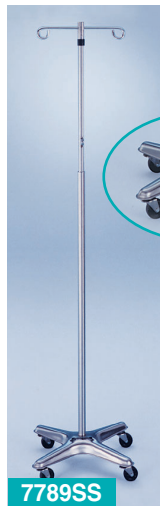
### STAINLESS

**MODEL 1410SS IV STAND** sits on a 22" diameter stainless steel base with Wall Savers™ to protect against scuffmarks. The Tru-Loc™ friction knob secures height position. Travels on four, 2" hard rubber casters. Height adjustment is 51-3/4" to 94". Minimal assembly required.

Model No.	Part No.	Feature	Ship Wt. (lb)
1410SS	0571410000	(2-hook)	15
1410SS-4	0571410400	(4-hook)	15



1410SS



7789SS

**MODEL 7789SS, 7790SS AND 7788SS STAINLESS STEEL IV STANDS** are built with a high quality, rounded, die-formed base, which means no flat surfaces for dirt to collect, a safehousing for casters and a no-tip base. Choose an automatic thumb release for the convenience of one-hand operation or a twist lock that adjusts easily when turned, locks securely in place. All stands travel on 2" ball bearing swivel casters for optimal mobility. Our foot-operated IV stand is for customers who prefer hands free operation, with a guard over the foot mechanism, which prevents accidental release. **See page 4 for photos of height adjustment mechanisms.**

Model No.	Part No.	Feature	Height Adjustment	Ship Wt. (lb)
7789SS	0517789000 (2-hook)	Automatic thumb control	66" - 100"	25
7789SS-4	0517789400 (4-hook)	Automatic thumb control	66" - 100"	26
7790SS	0527790000 (2-hook)	Twist lock	66" - 100"	26
7790SS-4	0527790400 (4-hook)	Twist lock	66" - 100"	27
7788SS	0517788000 (2-hook)	Foot-operated	66" - 100"	27
7788SS-4	0517788400 (4-hook)	Foot-operated	66" - 100"	28

**Option:** 10" x 15" utility tray on all models.

## FIVE-LEG IV STANDS:



**FIVE-LEG IV STANDS** sit on a 24" diameter, polished die cast aluminum base with Wall Saver™ end caps to protect against scuffmarks. **Select a stainless or chrome post and your choice of four different height adjustment mechanisms.** All five-leg IV poles offer a two or four-hook interchangeable ram's horn. All chrome stands feature colored poly-coated secure grip hook tips for protection and identification. Five-leg IV stands travel on 2-1/2" twin-wheel hooded casters or 2" or 3" hard rubber swivel casters. **Special features can be found on Model 1350** - our heavy-duty chrome IV stand with a 1-1/4" outside diameter base post and 1" outside diameter extension post. This model comes with two, four or six-hook interchangeable ram's horn. The **Offset IV Stand (7793SS)** offers maximum support for infusion pumps with a platform measuring 6-1/2" x 4".

*Note: PH denotes push handle • SS denotes Stainless Steel*

*Note: All five-leg IV stands ship in 2 separate cartons and require minimal assembly.*



Model No.	Part No.	Post	Type of Adjustment	Hooks	Height Adj.	Casters	Ship Wt. (lb)
<b>CHROME</b>							
1315	0561315000	Chrome	Tru-Loc™ friction knob	2	52-1/2" - 93-1/2"	2 1/2"	13
1315-4	0561315400	Chrome	Tru-Loc™ friction knob	4	52-1/2" - 93-1/2"	2 1/2"	13
1325	0561325000	Chrome	Twist lock	2	52-1/2" - 94-1/4"	2 1/2"	13
1325-4	0561325400	Chrome	Twist lock	4	52-1/2" - 94-1/4"	2 1/2"	14
1335	0561335000	Chrome	Trigger action lock	2	57" - 103"	2 1/2"	13
1335-4	0561335400	Chrome	Trigger action lock	4	57" - 103"	2 1/2"	13
1350	0561350000	Chrome	Tru-Loc™ friction knob	2	56" - 100"	2 1/2"	14
1350-4	0561350400	Chrome	Tru-Loc™ friction knob	4	56" - 100"	2 1/2"	15
1350-6	0561350600	Chrome	Tru-Loc™ friction knob	6	56" - 100"	2 1/2"	15
<b>STAINLESS</b>							
1415SS	0531415000	SS	Tru-Loc™ friction knob	2	52" - 94"	2"	13
1415SS-4	0531415400	SS	Tru-Loc™ friction knob	4	52" - 94"	2"	13
7792SS	0537792000	SS	Twist lock	2	74" - 110"	3"	35
7792SS-4	0537792400	SS	Twist lock	4	74" - 110"	3"	35
7792SS-PH	0537792003	SS	Twist lock	2	74" - 110"	3"	45
7792SS4-PH	0537792403	SS	Twist lock	4	74" - 110"	3"	45
7793SS	0537793000	SS	Tru-Loc™ friction knob	2	74" - 84"	3"	35
7793SS-4	0537793400	SS	Tru-Loc™ friction knob	4	74" - 84"	3"	35
7794SS	0517794000	SS	Automatic thumb control	2	67" - 98"	3"	35
7794SS-4	0517794400	SS	Automatic thumb control	4	67" - 98"	3"	35



**MODEL 1360 CHROME HEAVY-DUTY IV STAND** features a wide 26" diameter epoxy-coated **SIX-LEG BASE** for durability and corrosion resistance. Designed for hospital applications requiring multiple pumps or accessories or whenever a heavier base is required. Add a 1-1/4" outside diameter base post with a 1" outside diameter extension post and you have the toughest stand in our chrome line. The Tru-Loc™ friction knob secures height position. This model comes with two, four or six-hook interchangeable ram's horn. The hook tips are colored with a poly-coated secure grip for easy identification. Stand travels on 3" single wheel hard rubber casters. Adjusts from 58"-102". Minimal assembly required.

Model No.	Part No.	Ship Wt. (lb)
1360	0561360000 (2-hook)	22
1360-4	0561360400 (4-hook)	22
1360-6	0561360600 (6-hook)	24



Tru-Loc™ Friction knob



Twist-Lock



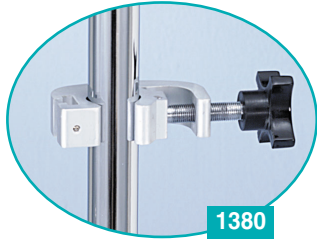
Automatic thumb control



Trigger action lock

*Note: All five and six-leg IV stands are shipped in two cartons and require minimal assembly.*

## IV ACCESSORIES:



1380

**MODEL 1380 COMPREHENSIVE CLAMP-** This aluminum clamp is required for the fast and flexible attachment of the guidance handle (1381), utility console tray (1384), multiple pump holder (1385) and tank holder (1386).

Model No.	Part No.	Ship Wt. (lb)
1380	7801380000	1



1381

**MODEL 1381 GUIDANCE HANDLE-** This steering aid provides for patient mobility. Has a non-slip black vinyl coated finish. Attaches with the comprehensive clamp (1380), sold separately.

Model No.	Part No.	Ship Wt. (lb)
1381	7801381000	2



1382

**MODEL 1382 DRAINAGE BAG HOOK-** Simple-to-use chrome-plated hook clamps onto both 1" and 1-1/4" diameter IV poles. Tighten with thumbscrew.

Model No.	Part No.	Ship Wt. (lb)
1382	7801382000 (fits 1" diameter IV poles)	1
1382HD	7801382125 (fits 1-1/4" diameter IV poles) On models 1350,1360	2



1384

**MODEL 1384 PUMP SUPPORT TRAY-** This chrome-plated tray (5" x 6") attaches easily to the IV stand with the **comprehensive clamp - Model 1380** - sold separately. Hole (1/2" diameter) in center of tray provides for easy pump attachment.

Model No.	Part No.	Ship Wt. (lb)
1384	7801384000	3



1385

**MODEL 1385 MULTI-PUMP HOLDER-** Fabricated from chrome-plated steel, this unit comes equipped with two comprehensive clamps, included with the unit. Easy to mount and remove. Holds up to four IV pumps. Fits any diameter IV pole. 17-3/4" W x 27-3/4" H.

Model No.	Part No.	Ship Wt. (lb)
1385	7801385000	8



1386

**MODEL 1386 TANK HOLDER-** Fabricated from chrome-plated steel, this holder attaches to the IV pole via the **comprehensive clamp - Model 1380** - sold separately. Holds D and E size oxygen tanks.

Model No.	Part No.	Ship Wt. (lb)
1386	7801386000	3

## SOLUTION STANDS:

### STAINLESS

**MODELS 1810SS, 1820SS AND 1830SS SOLUTION BASINS** are fabricated from type 304 stainless steel for durability. Choose one or two 7 qt. bowls, which rest firmly on a square frame, for easy basin removal. H-brace design enhances structural integrity. Stands travel effortlessly on 2" hard rubber casters.

Model No.	Part No.	Dimensions	Basins	Ship Wt. (lb)
1810SS	0771810000	14"L 19"W 33"H	1	20
1820SS	0711820244	14"L 32"W 33"H	2	28
1830SS	9701830000	Solution Basin, 7qt.	3	3



1810SS



1820SS

**MODEL 7807SS (BAKER) AND MODEL 7808SS (SNYDER) SOLUTION STANDS** have a single or double basin with a supporting frame connected by your choice of a bottom shelf or H-brace. The bracing and shelf, as well as all stainless welded construction, enhance the stand's strength and stability. Stainless steel basin has large 8-1/2 qt. capacity yet is unusually quiet when dropped into the circular ring. Rubber bumpers are placed strategically inside the ring to reduce noise from metal to metal contact. Travels quietly on two-inch swivel casters.

Model No.	Part No.	Feature	Dimensions (overall)	Basins	Ship Wt. (lb)
7807SS	0717807000	shelf	15"L 15"W 33"H	1	19
7807SS-HB	0717807100	H-brace	15"L 15"W 33"H	1	18
7808SS	0727808000	shelf	29"L 15"W 33"H	2	33
7808SS-HB	0727808100	H-brace	29"L 15"W 33"H	2	29
SB-1	9737370120	8-1/2 qt.	14"D	-	4



7807SS-HB



7807SS



7808SS



PRODUCT LISTING:

INSTRUMENT (MAYO) STANDS

Table with 4 columns: Model No., Part No., Description, Ship Wt.(lb). Rows include CHROME: 1500, 1501, 1510, 1515.

STAINLESS STEEL:

Table with 4 columns: Model No., Part No., Description, Ship Wt.(lb). Rows include 1520SS, 7767SS, 7769SS, 7740SS, 7749SS, 7741SS, 7751SS, 7748SS, 7744SS, 7765SS, 8769SS, 8771SS.

CHROME IV STANDS

FOUR-LEG IV STANDS:

Table with 4 columns: Model No., Part No., Description, Ship Wt.(lb). Rows include 1305, 1305-2P, 1305-4P, 1310, 1310-4.

FIVE-LEG IV STANDS:

Table with 4 columns: Model No., Part No., Description, Ship Wt.(lb). Rows include 1315, 1315-708, 1315-4, 1315-4-708, 1325, 1325-4, 1335, 1335-4, 1350, 1350-4, 1350-6.

SIX-LEG IV STANDS:

Table with 4 columns: Model No., Part No., Description, Ship Wt.(lb). Rows include 1360, 1360-4, 1360-6.

STAINLESS STEEL IV STANDS

Table with 4 columns: Model No., Part No., Description, Ship Wt.(lb). Rows include FOUR-LEG IV STANDS: 1410SS, 1410SS-4, 7789SS, 7789SS-4, 7790SS, 7790SS-4, 7788SS, 7788SS-4.

OPTION:

Table with 4 columns: Model No., Part No., Description, Ship Wt.(lb). Row: IT1AFR 3577901015 10" x 15" Instrument tray.

FIVE-LEG IV STANDS:

Table with 4 columns: Model No., Part No., Description, Ship Wt.(lb). Rows include 1415SS, 1415SS-4, 7792SS, 7792SS-4, 7792SS-PH, 7792SS4-PH, 7793SS, 7793SS-4, 7794SS, 7794SS-4.

IV STAND ACCESSORIES

Table with 4 columns: Model No., Part No., Description, Ship Wt.(lb). Rows include 1380, 1381, 1382, 1382HD, 1384, 1385, 1386.

SOLUTION STANDS

Table with 4 columns: Model No., Part No., Description, Ship Wt.(lb). Rows include 1810SS, 1820SS, 1830SS, 7807SS, 7807SS-HB, 7808SS, 7808SS-HB, SB-1.

\* Items can be shipped via FedEx® Ground delivery service.



39 Robinson Road, Lodi, NJ 07644 • Phone: 800-247-5070 • Fax: 201-909-0832 e-mail: info@blickman.com • www.blickman.com